



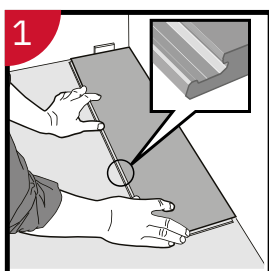
# PROPER FLOORS®



## Important information

- The flooring must be acclimated a minimum of 24 to 48 hours prior to installation in the room where the installation will take place.
- In rooms larger than the equivalent of 20 x 20 m, the flooring must be installed in smaller sections with expansion joints.
- The distance to walls and other permanent pieces of construction elements (such as pillars and kitchen islands) should be approximately 5 mm.
- **Never install very heavy pieces of furniture such as kitchen islands/cabinets on top of the flooring.**
- The indoor climate should have a temperature between 15-23 °C and relative air humidity between 30-60%.
- Always follow Proper Floors® requirements and specifications regarding subfloor preparation.

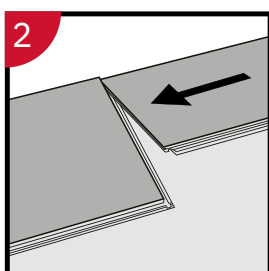
## General installation instructions



### First plank, first row

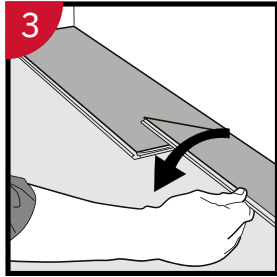
Place a spacer to the left and position the plank against it with the tongue side against the wall.

Later on you will be able to easily position the flooring against the front wall using the spacers.

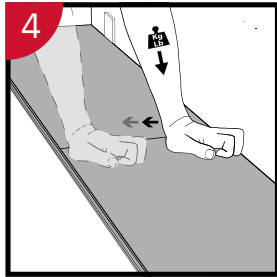


### Second plank, first row

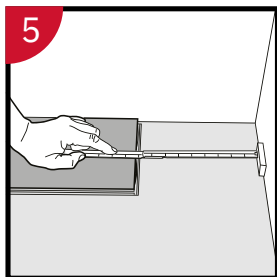
Place the next plank gently and close to the short end of the first plank.



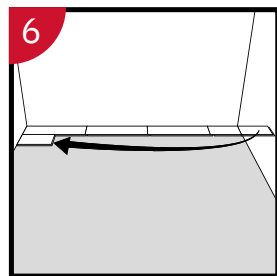
When folding the plank down it is important to start from the corner closest to the previous row, folding down towards the centre, and continuing towards the opposite long side. During the fold down, make sure the planks are close to each other.



Afterwards press along the short end just installed to secure it.

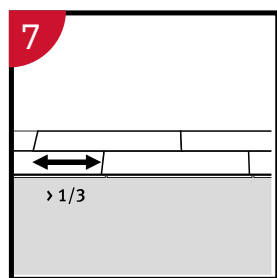


At the end of the first row, put a spacer against the wall and measure the length from the last plank to the wall.

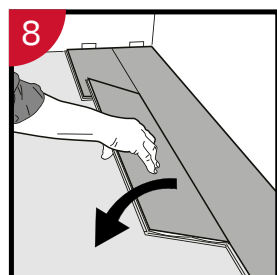


### Second row

First plank (in the second row) needs to have a minimum length of 400 mm. Put a spacer against the left wall.

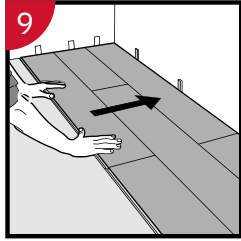


Staggered joint distance i.e. minimum distance between short ends of planks in parallel rows shall not be less than 20 inches.



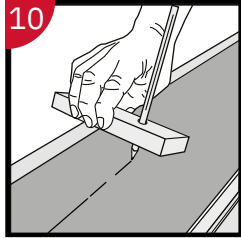
### Second plank, second row

Place the plank gently and close to the short end of the previous plank and fold it down in a single action movement.



### After 2-3 rows

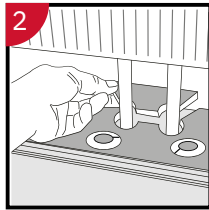
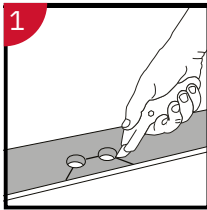
Adjust the distance to the front wall by placing spacers.



### Last row

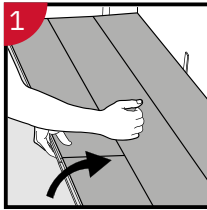
Minimum width 50 mm. Place a spacer to the wall before measuring. Make a simple drawing tool (piece of wood with a hole) and/or use a straight edge to mark the plank along the wall. Cut the plank lengthwise.

## Installation around radiator/heating pipes



Drill holes two times larger than the diameter of the pipes. Remove a piece of the plank with a utility knife. Put the plank on one side of the pipes and the removed piece on the other side.

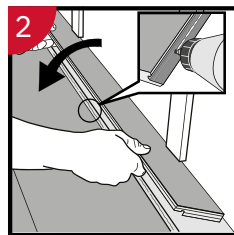
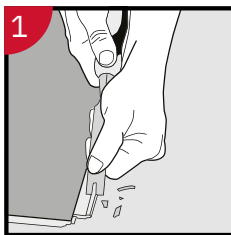
## Dismantling panels



Separate the whole row by carefully lifting up and releasing the whole row.

Fold up the row and release the whole long side.

## When angling is not possible



Remove the vertical locking part of the strip with a chisel, put applicable glue on the strip and push the planks horizontally together. Place some spacers between last plank and the wall.



Disassemble the plank by sliding the short ends horizontally.

Never fold up a plank as this damages the profile.

## **PLEASE READ BEFORE STARTING:**

WPC Click is a floating floor which should never be nailed down to the substrate. It should be laid flat and fully supported during shipping and storage. Remove material from packaging, spread out if possible and allow to condition in room where installation is to take place at a constant temperature of 18-26 °C for a period of 24 hours prior to installation.

Check your WPC click flooring for possible defects prior to the installation. Complaints can only be accepted before installation. Slight variations in colour and structure are designed to enhance natural appearance. Mixing the sheets creates a uniform laying pattern. WPC click flooring is production-run sensitive. Ensure that all planks you are installing come from the same production run. Proper Floors® cannot guarantee that any future replacement or additional installation will match the originally installed product.

Room temperature shall be no less than 18 °C for 24 hours before, during and after installation. Do not install WPC Click flooring where it will be exposed to temperatures greater than 60 °C. Your WPC Luxury Vinyl Flooring is waterproof but is not a moisture barrier. Water traveling over or around the outer edges of the flooring can damage the subfloor. Water damage and or associated conditions are not warranted. In addition, other contaminants could migrate up as well. These are not manufacturing related conditions.

When installing in a lavatory, bathroom, laundry room, or other area with frequent water usage, it is recommended that any perimeter gap be filled with a silicone caulk. This will lower the possibility of the water traveling under the floating floor and help to reduce bacterial growth and problems associated with it.

## **Subfloor must be checked prior to installation:**

### **General information**

WPC Click flooring can be installed on most existing floors including wooden, PVC and concrete floors. All carpeting and padding as well as adhesives from prior installation must be **removed** from the surface of the subfloor. Make sure that the surface is structurally sound, solid, stable, level, flat and true to a tolerance in plane of 3/16" in 10 feet. Cracks and holes must be filled with a fast-setting cement-based polymer modified patching compound or equivalent. The surface must be clean of dirt, oil, glue residue etc.

WPC Click flooring is to be installed as a floating floor meaning that there must be expansion gap of 6-10mm between the perimeter walls and any adjacent hardwood floor. This applies to any obstructions (columns, pipes) in the installation as well. When installing in spaces greater than 10 meters lengthwise or 10 meters widthwise the use of transition moldings to provide proper expansion space is recommended.

### **Radiant Heating Systems**

WPC Click can also be installed over radiant heat. Turn the heat off for 24 hours before, during and 24 hours after installation when installing over radiant heated subfloors. After the installation is complete, or when turning on the radiant heat system from a cold start, the operating temperature may be increased by a maximum of 3 °C in a 24-hour period. Make sure the floor temperature does not exceed 29 °C.

## **CARE AND MAINTENANCE**

Do not wax or polish your WPC click flooring. Never steam clean or use a steam mop on the floor.

Sweep regularly to remove surface grit and dust.

For everyday cleaning, use a vacuum cleaner with wand attachment, a sweeping broom, or a slightly dampened mop. All spills should be cleaned up immediately.

Do not clean your floor with abrasive cleaners, abrasive scrubbing pads or scouring powdered products as they may dull or distort the finish. Do not buff your floors.

Appropriate mats at entryways are recommended to collect tracked-in dirt, sand, and pebbles.

Frequently moved furniture should be equipped with felt pads to avoid scratching the floor.

Heavy furniture and appliances should be equipped with non-staining large surface floor protectors. Furniture with castors or wheels must be easy swivelling, large surface non-staining and suitable for resilient floors. High heels can damage floors. Hard surface mats are required under office chairs.

Care must be required whenever furniture is moved, furnished should never be dragged across the floor. Use appropriate moving pads if necessary.

Avoid exposure to direct sunlight for prolonged periods of time. Use drapes or blinds to minimize direct sunlight during peak sunlight hours.

It's a good idea to save a few planks in case of accidental damage. Planks can be replaced or repaired by a flooring professional.